

Marin County
Department of Public Works

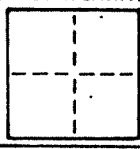
CORNER RECORD

AP Book 43, Pages 13,16

COUNTY OF Marin T. _____ R. _____ MERIDIAN CALIFORNIA

CORNER TYPE: GOVT. CORNER MEANDER June RANCHO CONTROL OTHER

CORNER IDENTIFICATION — DATE OF VISIT _____ 1987



Centerline intersection of Ricardo Road and Reed Boulevard
per Map of Strawberry Manor (6 Maps 63)

CORNER — LEFT AS FOUND FOUND AND TAGGED REESTABLISHED OBLITERATED CORNER REBUILT

PHYSICAL DESCRIPTION OF CORNER FOUND; EVIDENCE AND METHOD USED TO IDENTIFY OR REESTABLISH

Found tag RE3230 in concrete inside 4" steel sleeve 4-1/2" below AC surface.
Found at point indicated by street improvements and substantial agreement
with next monument.

PHYSICAL DESCRIPTION OF MONUMENTS, REBUILT OR PERPETUATED

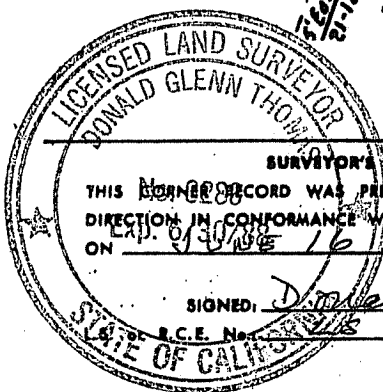
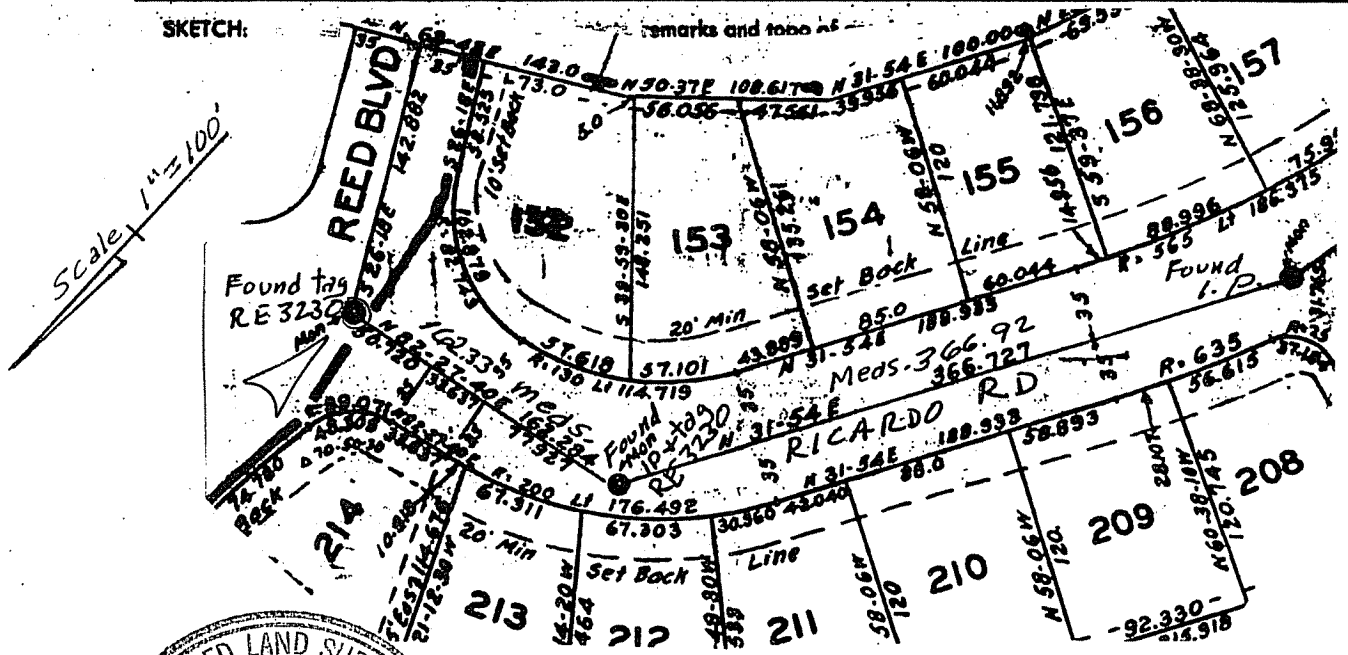
Replaced tag in concrete with DPW bronze disk in standard street monument.

CALIFORNIA COORDINATE SYSTEM ORDER: FIRST SECOND THIRD

STATIONS USED: NGS (USC & GS) STATE COUNTY OTHER STATION _____ STATION _____

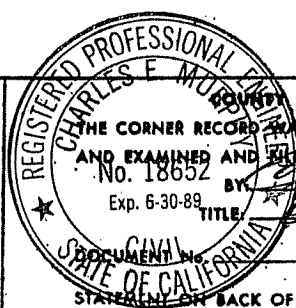
ZONE _____ ELEVATION _____ NORTHINGS (Y) _____ EASTINGS (X) _____

SKETCH:



SURVEYOR'S CERTIFICATE
 THIS CORNER RECORD WAS PREPARED BY ME OR UNDER MY
 DIRECTION IN CONFORMANCE WITH THE LAND SURVEYORS ACT
 ON June 16 1987

SIGNED: Donald Thomas
 E.C.E. No. 218 3208



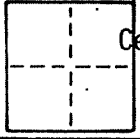
REGISTERED PROFESSIONAL ENGINEER'S CERTIFICATE
 THE CORNER RECORD WAS RECEIVED
 AND EXAMINED AND FILED
 NO. 18652 BY Charles F. Murphy
 Exp. 6-30-89 TITLE Dep Cor Surv.

STATEMENT ON BACK OF SHEET

SEAL

YES NO

COUNTY OF County T. _____ R. _____ MERIDIAN _____ CALIFORNIA
 CORNER TYPE: GOV'T. CORNER MEANDER RANCHO CONTROL OTHER
 CORNER IDENTIFICATION — DATE OF VISIT June 1987



Centerline P.I. on Ricardo Road in front of Lot 212 of Strawberry Manor (6Maps 63)

CORNER — LEFT AS FOUND FOUND AND TAGGED REESTABLISHED OBLITERATED CORNER REBUILT

PHYSICAL DESCRIPTION OF CORNER FOUND; EVIDENCE AND METHOD USED TO IDENTIFY OR REESTABLISH

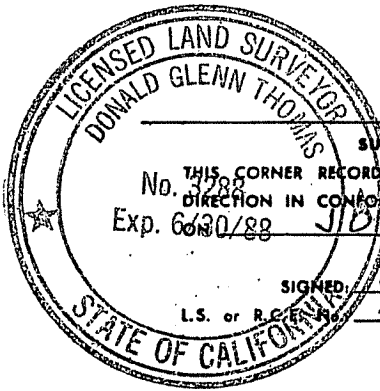
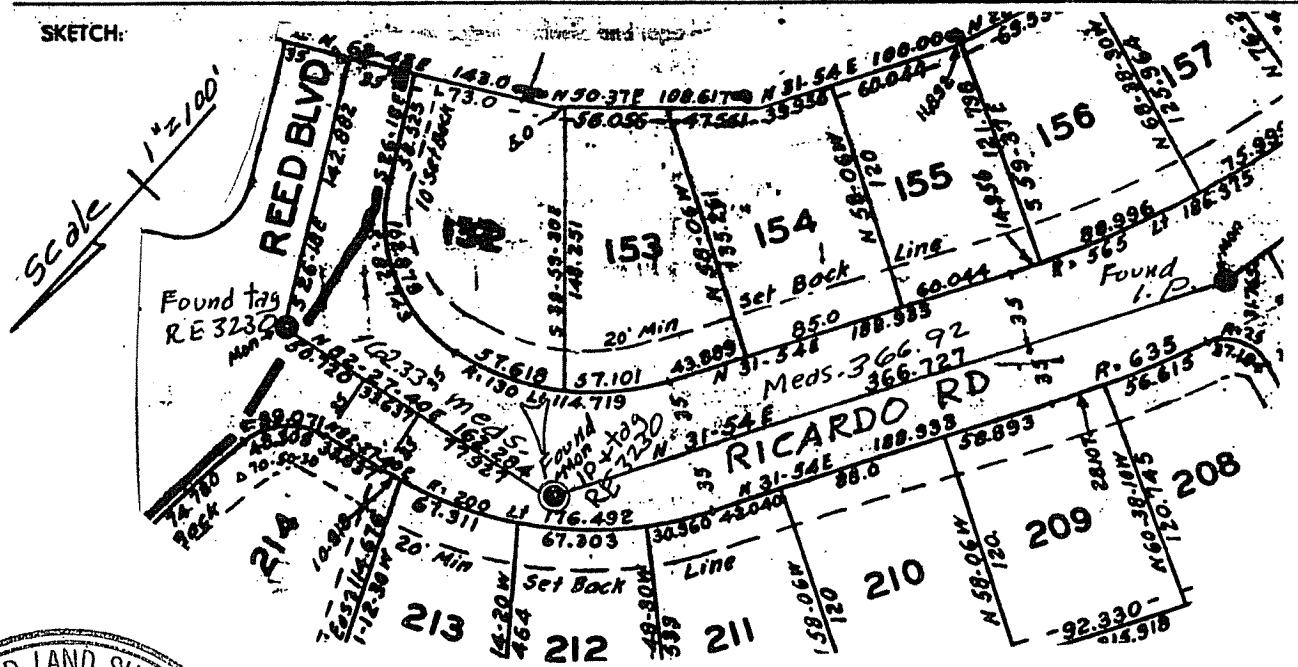
Found 1-1/2" I.P. and tag: RE3230 on surface.
 Found at point indicated by street improvements and in substantial agreement with neighboring monuments.

PHYSICAL DESCRIPTION OF MONUMENTS, REBUILT OR PERPETUATED

Replaced I.P. with DPW bronze disk in standard street monument.

CALIFORNIA COORDINATE SYSTEM ORDER: FIRST SECOND THIRD
 STATIONS USED: NGS (USC & GS) STATE COUNTY OTHER STATION _____ STATION _____
 ZONE _____ ELEVATION _____ NORTHINGS (Y) _____ EASTINGS (X) _____

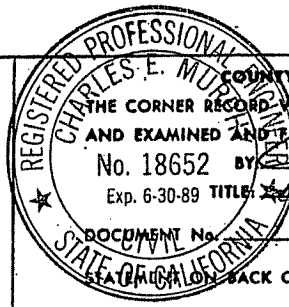
SKETCH:



SURVEYOR'S CERTIFICATE
 THIS CORNER RECORD WAS PREPARED BY ME OR UNDER MY DIRECTION IN CONFORMANCE WITH THE LAND SURVEYORS ACT
 No. 3288
 Exp. 6/30/88 JUNE 16 1987

SIGNED: Donald Thomas
 L.S. or R.C. LS 3288

SEAL

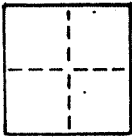


COUNTY SURVEYOR'S CERTIFICATE
 THE CORNER RECORD WAS RECEIVED _____ 19____
 AND EXAMINED AND FILED 720 1987
 No. 18652 BY Charles E. Murphy
 Exp. 6-30-89 TITLE Dep. Co. Surv.

DOCUMENT No. _____
 STATE OF CALIFORNIA
 BACK OF SHEET

YES NO

COUNTY OF Marin T. _____ R. _____ MERIDIAN _____ CALIFORNIA
 CORNER TYPE: GOVT. CORNER MEANDER June RANCHO CONTROL OTHER
 CORNER IDENTIFICATION — DATE OF VISIT _____ 1987



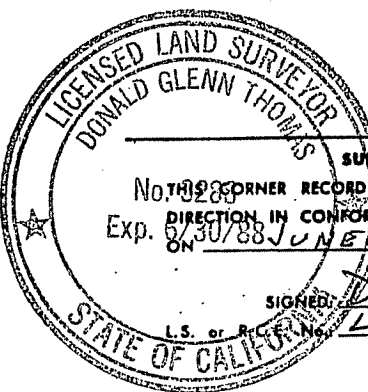
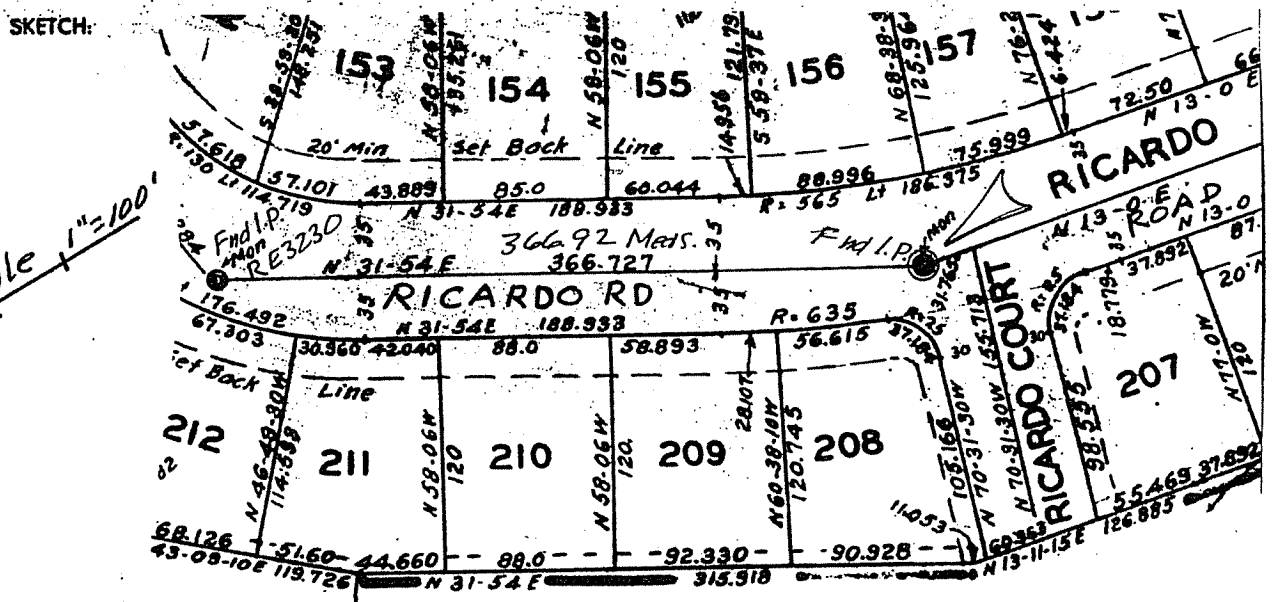
Centerline P.I. on Ricardo Road near Ricardo Court
per Map of Strawberry Manor (6 Maps 63)

CORNER — LEFT AS FOUND FOUND AND TAGGED REESTABLISHED OBLITERATED CORNER REBUILT

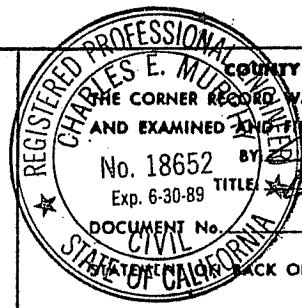
PHYSICAL DESCRIPTION OF CORNER FOUND; EVIDENCE AND METHOD USED TO IDENTIFY OR REESTABLISH
 Found 1-1/2" I.P. and nail 3-1/2" below AC surface
 Found at point indicated by street improvements and in
 substantial agreement with neighboring monuments.

PHYSICAL DESCRIPTION OF MONUMENTS, REBUILT OR PERPETUATED
 Replaced I.P. with DPW bronze disk in standard street monument.

CALIFORNIA COORDINATE SYSTEM ORDER: FIRST SECOND THIRD
 STATIONS USED: NGS (USC & GS) STATE COUNTY OTHER STATION _____ STATION _____
 ZONE _____ ELEVATION _____ NORTHINGS (Y) _____ EASTINGS (X) _____



SURVEYOR'S CERTIFICATE
 No. 18652 CORNER RECORD WAS PREPARED BY ME OR UNDER MY
 DIRECTION IN CONFORMANCE WITH THE LAND SURVEYORS ACT
 ON 8/30/88 JUNE 16 1987
 SIGNED: Donald Thomas
 L.S. No. LS 3788



COUNTY SURVEYOR'S CERTIFICATE
 THE CORNER RECORD WAS RECEIVED _____ 19____
 AND EXAMINED AND FILED 7-20 1987
 No. 18652 BY Charles E. Mullen
 Exp. 6-30-89 TITLE D.P.W. Cor. Surv.
 DOCUMENT No. _____
 CIVIL
 STATE OF CALIFORNIA